



TWS F9 - Bluetooth Earbuds Manual

[Manuals](#) / [Brands](#) / [tws Manuals](#) / [Headphone](#) / [F9](#) / [User manual](#) / PDF

Contents

- 1 [Specification of Earbuds](#)
- 2 [Sketch](#)
- 3 [Fitting](#)
- 4 [How to pairing](#)
- 5 [Warming remain](#)
- 6 [Care and maintenance](#)
- 7 [Safety guidance](#)
- 8 [FAQ and Solutions](#)



Specification of Earbuds

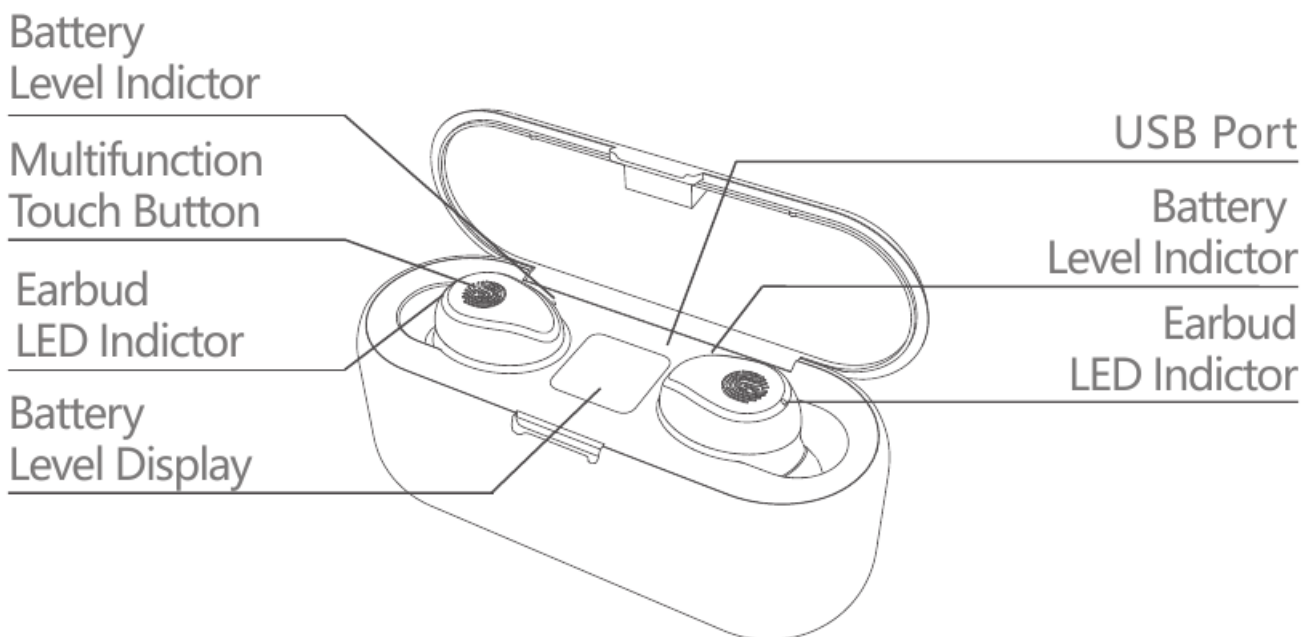
1. Product Name: F9
2. Bluetooth Version: Version 5.0
3. Protocol: Supports HFP 1.7, HSP 1.2, AVRCP 1.6, SPP 1.2 and PBAP 1.0
4. Chipset: BT8812E
5. Working distance: 10M
6. Call Time: 5-6H (1 time full charged)
7. Play Music Time: 5-6H (1 time full charged)

8. Standby time: 650H (With charger case)
9. Frequency: 2402MHz~2480MHz
10. Battery type: 3.7V, >50mA Li Battery
11. Charging Time: 1-2H
12. Working Temperature: -10°-55°

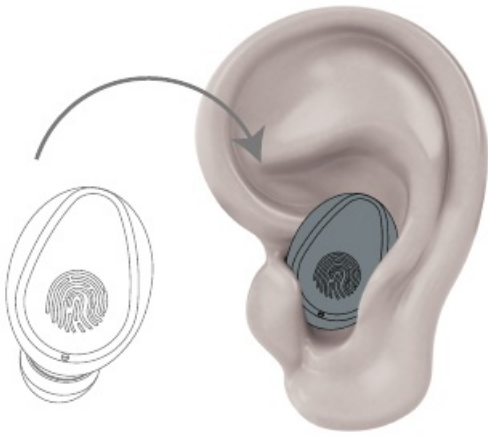
Specification of charger case:

1. Input current: 5V-1A
2. Output current: 5V 1A
3. Battery type: 3.7V
4. Charging time: 1-2H

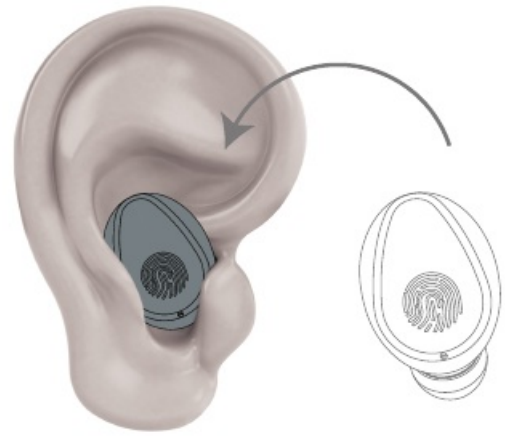
Sketch



Fitting



L for Left



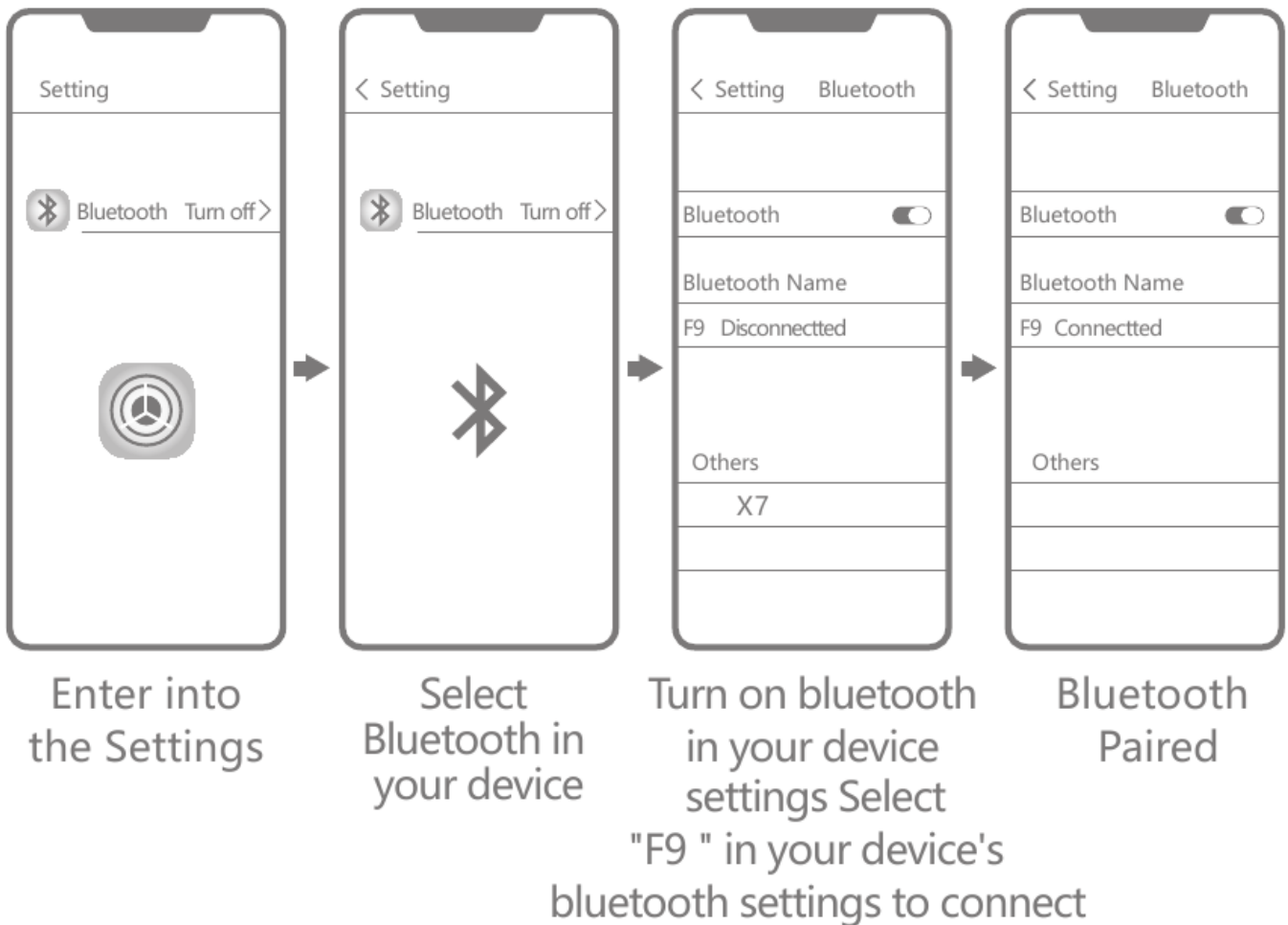
R for Right

The earcap heads down
Smaller heads up
Adjust to the best fit

How to operate the earbuds:

1. Make sure that the charging case has electricity. If the charging compartment is out of power, please fully charge the charging compartment;(Pick up the two earbuds and put them back on the cover. The charging compartment indicator lights up to indicate that there is power. If it does not light, it means no power.)
2. Take the two earbuds out of the charging case and wear them on the left and right ears respectively. The earphones will automatically turn on and automatically pair; (Voice prompt: power on, left channel, right channel, waiting for connection).
3. Turn on the phone Bluetooth and click on the connection pair name "F9" to connect (voice prompt "Connected").

How to pairing



Warming remain

For the first time to use the earbuds or for a long time to no use, please charge the charging case and earphones before, Please keep it in an unobstructed and effective environment within 10 meters. Otherwise, it may be stuck and disconnected.

Indicator description:

1. Charge the earbuds: Put the earbuds into the charging case and cover it to charge. earbuds indicator: Lights up red when charging, and red light when fully charged. The charging case flashes green and the light is off after charging.
2. Charge the charging case: Plug the 5V/1A USB into the charging port to charge. During charging, the middle digit of the charging stand display indicates the charging case power. When the number is displayed as "100", the battery is fully charged. Charging case indicator light: The charging flashes green light, and the light is off after charging.
3. Charge to the mobile phone; 3 Charge the mobile phone: Connect USB Cable to USB port of case to charge the mobile phone. ChargingCase indicator light: Light will turn green when charging and turn off when fully charged

How to operate:

Turn on: Press and hold the touch multi-function button for 3 seconds or take it out from

the charging case, the earbuds will be turned on automatically

Turn off: Press and hold the touch multi-function button for 5 seconds (Led light turn red and stay) to shut down, or directly put the earbuds back into the charging case, the earbuds automatically turns red and automatically turns off.

Answer and hang up: When phone coming, short press the touch button one time, answer the phone, short press the touch button one time when call end

Reject the phone: Press the touch button for 3s, reject the phone Start Siri: Long press Right earbud or Left earbud for 1s you will hear "DU", release and phone voice control is started. Siri supported only NEXT/PREV Songs: Double click on the Right earbud(R), it plays next song, double click on the L earbud, it plays previous song

Track Forward



Track Backward



Volume +/-: Continuous press right earbud 3 times to turn up the volume; continuous press left earbud 3 times to turn down the volume, or you can adjust the volume on the phone directly.

Volume +



Volume -



Single Earbud Mode: When the main earbud (R) and the secondary earbud (L) are not connected, taking out one of any of the earbuds separately from the charging case. The earbud prompts "turn on", then for 3 seconds, the blue light flashes---the red and blue lights flash alternately, open the mobile phone Bluetooth function, search for the Bluetooth device and Click Connect, the "Bluetooth Connected " will be displayed in the upper right corner of the phone screen, and the earbud will prompt "Connected", or the manual operation of a single earbud will repeat the above operation.

Remark: Single use

Main earbuds(R) Bluetooth name: F9

secondary earbud (L) Bluetooth name: F9 L

Repeated use: the earbuds has been connected with the mobile phone--- open the phone Bluetooth, and take out the two earbuds from the charging case, without any operation, it will connect with the phone automatically. If you use a different phone, you

need to follow the steps in the instructions for use.

Special Note:The two earbuds are well paired before packaged, but if they can not paired well due to some wrong operations, pls. do as following steps to re-pair the earbuds. Power off the two earbuds, then press the button of the two earbuds at same time and do not release for about 10s, blue lights sparkled ----> red and blue lights sparkled alternatively ---> release --->two earbuds are in the situation of paired, and they are ready for phone searching.

Note: This operation also clears the team record between the phone and the earbuds, so you need to delete the Bluetooth pairing record before the phone and then search for the connection again.

Care and maintenance

1. To avoid any mis-operation caused by collision put the earbud in charging case before put in your pocket
2. Do not use a abrasive cleaner to clean the Bluetooth earbuds.
3. Do not expose the Bluetooth earbuds to excessive temperature.
4. Do not expose the earbud under the blazing sun for a long time
5. Do not let the Bluetooth earbuds be close to the fire source.
6. Do not drop, bump, scratch, twist, tap, crush, or put into the water.
7. Keep away from magnets, appliances and speakers when using Bluetooth earbuds.
8. Do not place the Bluetooth earbuds in extreme temperature (use ambient operating temperature range -10°C - 55°C)
9. Do not expose the Bluetooth earbuds to moisture.
10. If you do not use the Bluetooth earbuds for a long time, please charge it fully and charge it once a week to extend the life of the Bluetooth earbuds.

Safety guidance

1. please use the standard 5V charger (4.9-5.5V)
2. Do not place the charging case and the Bluetooth earbuds next to the flammable explosives.
3. Do not disassemble the charging case and Bluetooth earbuds, or insert other items into the product to avoid damage to the product or even cause harm to you.

Serious warning:



Do not use this product while charging. Please use the adapter specified by the manufacturer to charge the product. Do not disassemble the built-in lithium battery. Do not let the metal contact or short the electrode. Do not touch or squeeze the battery to avoid Place in a humid or hot (>60°C) environment.

FAQ and Solutions

Phenomenon	Failure Reason	Solution
Can not turn on / Turn off automaticly	Low battery	Charge the earbuds for 2-5H
No hint after paired	Not paired correctly	Re-paired
Can talk but red light is on	Red light is on for lower battery	Charge for the earbuds
No lights on when charging	No output from power supply	Check the power supply ifconnected weill
Echo	Too large volume or too noisy environmental	Turn down the volume or change the environmental
There is noise when talking	Environmental disturbance or too far away from device	Change the environment or move to place near the device
Low voice	Not wear earbuds correctly	Adjust the position of earbuds
Can not hear the music	The phone doesn't support	Need a phone support BT stereo